



FOR LEASE
7,500 SF WAREHOUSE/PARKING GARAGE
[1,700 sf second floor air-conditioned office available]

ADDRESS: 39-15 29TH Street
Long Island City, New York

DESCRIPTION: 7,500 SF On-Grade Warehouse/Garage

LOCATION: 3 Blocks to Queensboro Plaza
2 Blocks to Newly Renovated 39th Avenue Subway Stop (N or Q Lines)

FEATURES: 12'9" Ceiling Heights
Two New Bathrooms Recently Added in Warehouse
New LED Ceiling Lighting
Drive in Entrances on 29th
400 amps

ZONING: M1-2/R5D

POSSESSION: Upon Lease Signing

LEASE TERM: Negotiable

BASE RENT: \$187,500 Per Annum/\$15,625 Per Month

CONTACT: WERWAISS & CO., INC. (Exclusive Agent)
22-15 43rd Avenue - Suite 300
Long Island City, NY 11101
(212) 983-0044

werwaiss.com
gwerwaiss@werwaiss.com

All information furnished regarding property for sale, rental or financing is from sourced deemed reliable. No representation is made as to the accuracy thereof and it is submitted subject to errors, omissions, change of price, rental or other conditions, prior sale, lease or financing, or withdrawal without notice. BROKERS PROTECTED BY AGREEMENT ON FILE.

11/4/21

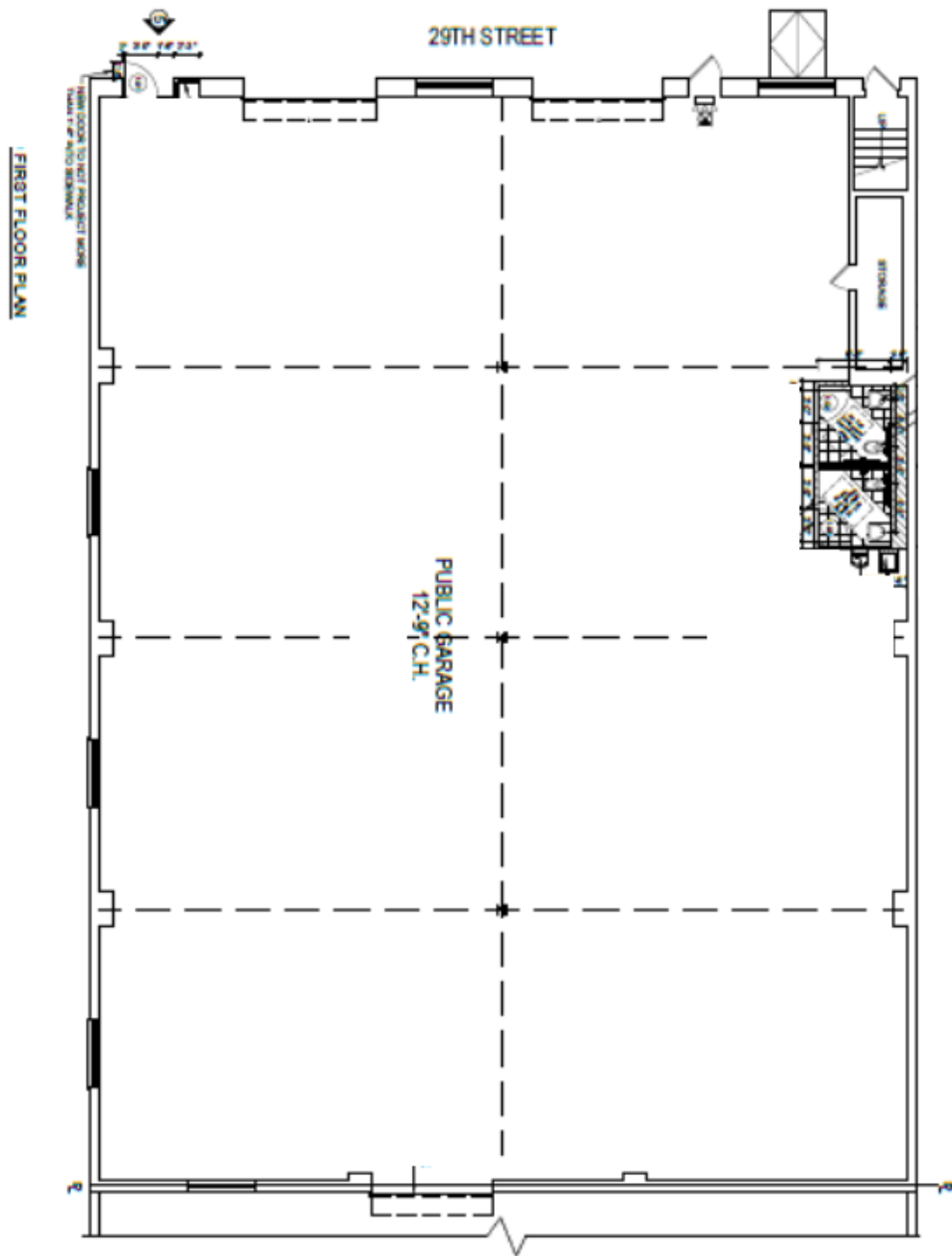
WERWAISS PROPERTIES



All information furnished regarding property for sale, rental or financing is from sourced deemed reliable. No representation is made as to the accuracy thereof and it is submitted subject to errors, omissions, change of price, rental or other conditions, prior sale, lease or financing, or withdrawal without notice. BROKERS PROTECTED BY AGREEMENT ON FILE. 11/4/21



Ground Floor



All information furnished regarding property for sale, rental or financing is from sourced deemed reliable. No representation is made as to the accuracy thereof and it is submitted subject to errors, omissions, change of price, rental or other conditions, prior sale, lease or financing, or withdrawal without notice. BROKERS PROTECTED BY AGREEMENT ON FILE.

11/4/21