

WERWAISS PROPERTIES



FOR LEASE **1,700 SF SECOND FLOOR OFFICE**

ADDRESS:

**39-15 29TH Street
Long Island City, New York**

LOCATION:

3 Blocks to Queensboro Plaza
2 Blocks to Newly Renovated 39th Avenue Subway Stop (N or Q Lines)

FEATURES:

Second Floor Air-Conditioned Offices
2 Bathrooms
5 Private Offices
Kitchenette

ZONING:

M1-2/R5D

POSSESSION:

Upon Lease Signing

LEASE TERM:

Negotiable

BASE RENT:

\$42,600 per year; \$3,550/month.

CONTACT:

WERWAISS & CO., INC. (Exclusive Agent)
22-15 43rd Avenue - Suite 300
Long Island City, NY 11101
(212) 983-0044
werwaiss.com

All information furnished regarding property for sale, rental or financing is from sourced deemed reliable. No representation is made as to the accuracy thereof and it is submitted subject to errors, omissions, change of price, rental or other conditions, prior sale, lease or financing, or withdrawal without notice. BROKERS PROTECTED BY AGREEMENT ON FILE.

11/4/21

gwerwaiss@werwaiss.com

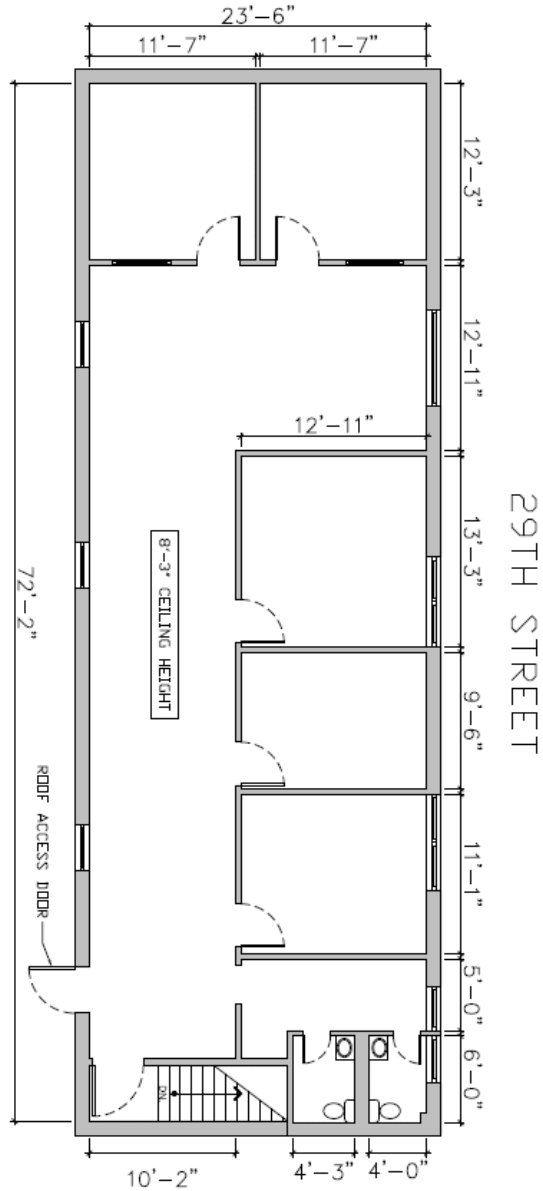
All information furnished regarding property for sale, rental or financing is from sourced deemed reliable. No representation is made as to the accuracy thereof and it is submitted subject to errors, omissions, change of price, rental or other conditions, prior sale, lease or financing, or withdrawal without notice. BROKERS PROTECTED BY AGREEMENT ON FILE.

11/4/21



All information furnished regarding property for sale, rental or financing is from sourced deemed reliable. No representation is made as to the accuracy thereof and it is submitted subject to errors, omissions, change of price, rental or other conditions, prior sale, lease or financing, or withdrawal without notice. BROKERS PROTECTED BY AGREEMENT ON FILE.

11/4/21



FLOOR PLAN

39-15 29TH STREET
 LONG ISLAND CITY, NY 11101
 PLANS AS OF MARCH 2015

