



WERWAISS PROPERTIES



FOR LEASE
1,700 SF SECOND FLOOR OFFICE

<u>ADDRESS:</u>	39-15 29 TH Street Long Island City, New York
<u>LOCATION:</u>	3 Blocks to Queensboro Plaza 2 Blocks to Newly Renovated 39 th Avenue Subway Stop (N or Q Lines)
<u>FEATURES:</u>	Second Floor Air-Conditioned Offices Newly painted and carpeted 2 Bathrooms 5 Private Offices Kitchenette
<u>ZONING:</u>	M1-2/R5D
<u>POSSESSION:</u>	Upon Lease Signing
<u>LEASE TERM:</u>	Negotiable
<u>BASE RENT:</u>	\$42,600 per year; \$3,550/month.
<u>CONTACT:</u>	WERWAISS & CO., INC. (Exclusive Agent) 22-15 43rd Avenue - Suite 300 Long Island City, NY 11101 (212) 983-0044 werwaiss.com gwerwaiss@werwaiss.com

All information furnished regarding property for sale, rental or financing is from sourced deemed reliable. No representation is made as to the accuracy thereof and it is submitted subject to errors, omissions, change of price, rental or other conditions, prior sale, lease or financing, or withdrawal without notice. BROKERS PROTECTED BY AGREEMENT ON FILE.

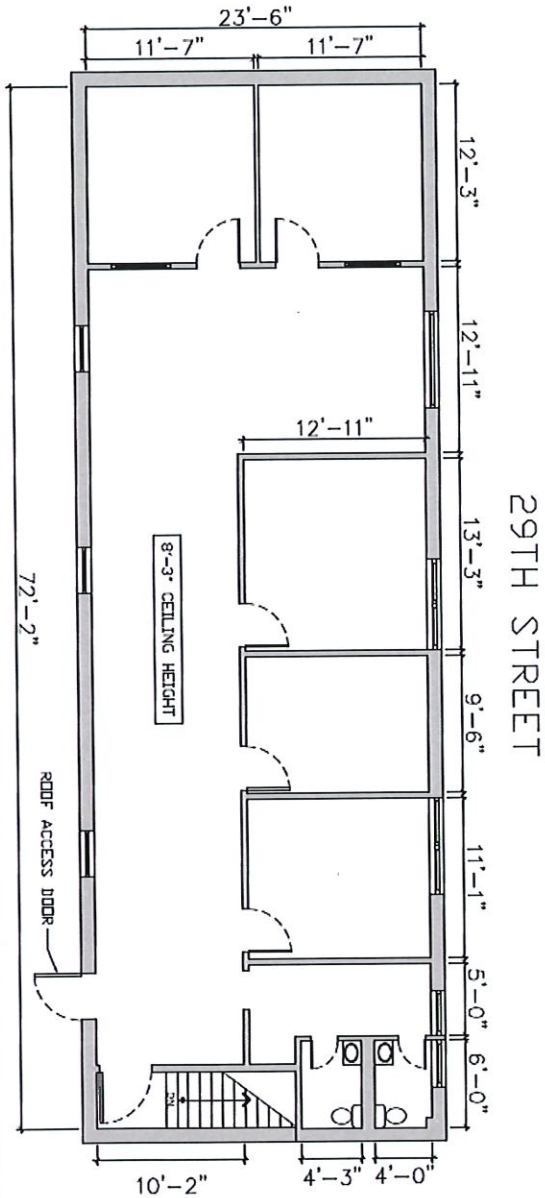
6/1/22



WERWAISS PROPERTIES

39-15 29TH STREET
LONG ISLAND CITY, NY 11101
PLANS AS OF MARCH 2015

FLOOR PLAN



W Werwaiss & Co., Inc.
OWNING, DEVELOPING AND MANAGING COMMERCIAL REAL ESTATE FOR FOUR GENERATIONS

All information furnished regarding property for sale, rental or financing is from sourced deemed reliable. No representation is made as to the accuracy thereof and it is submitted subject to errors, omissions, change of price, rental or other conditions, prior sale, lease or financing, or withdrawal without notice. BROKERS PROTECTED BY AGREEMENT ON FILE.

6/1/22