

22-15 43RD AVENUE

LONG ISLAND CITY

Office space available for lease

Lion Match Building



Owner/Manager



WERWAISS
PROPERTIES



**CUSHMAN &
WAKEFIELD**

22-15 43RD AVENUE

FOR LEASE

AVAILABLE SPACE - SUITE 210 & SUITE 230

SUITE 210: 6,348 RSF
PARTIAL SECOND FLOOR

SUITE 230: 1,371 RSF
PARTIAL SECOND FLOOR

PROPERTY FEATURES

- Located at intersection of Court Square and Queen Plaza in the heart of Long Island City
- Steps to public transportation (E, M, 7, G, R, N, W)
- Recently refreshed lobby
- Brand new 2nd floor bathroom and corridors
- Brand new office build out
- Brand new office HVAC
- Operable windows in suite
- Stairs from common hallway provide direct access to street
- On-site parking available
- 24/7 building access (On-site building attendant Mon-Fri 8AM-5PM)

SPACE FEATURES

	SUITE 210	SUITE 230
Asking Rent:	Upon Request	Upon Request
Occupancy:	October 2020	January 2021
Use:	General Office	General Office
Condition:	Suite was recently built out with three offices, a large conference room, pantry, reception area, and large open space. Move-in ready.	Space was recently built out as an open floor plan suitable for cubicles or temporary office partitions. Move-in ready.
Services:	Building has a full time, on-site attendant	Building has a full time, on-site attendant
Term:	Flexible	Flexible
Escalations:	3% annual rent escalations in lieu of operating costs	3% annual rent escalations in lieu of operating costs
Electric:	Sub-metered	Sub-metered
Real Estate Taxes:	Tenant to pay proportionate share of real estate taxes above Base Year	Tenant to pay proportionate share of real estate taxes above Base Year
Concessions:	To be discussed	To be discussed



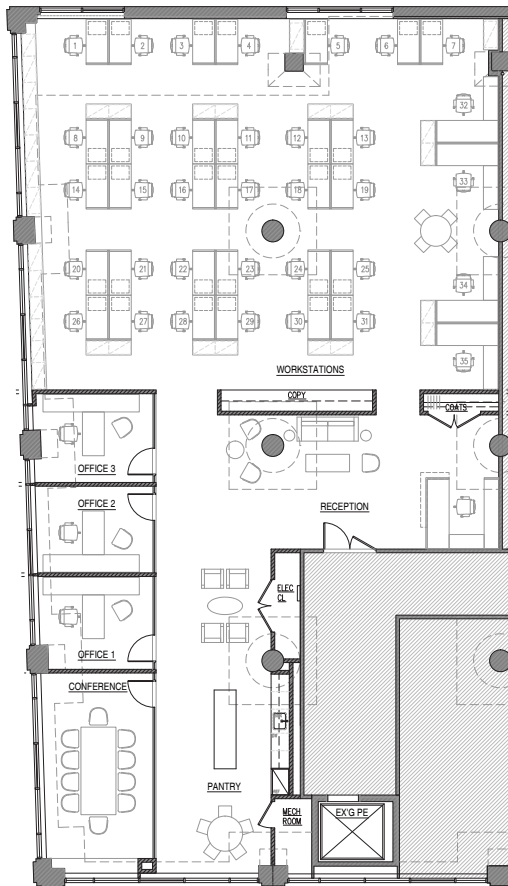
Building Entrance



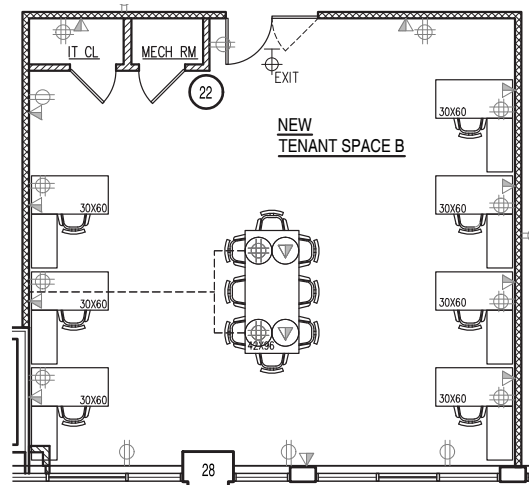
Lobby

FLOOR PLANS

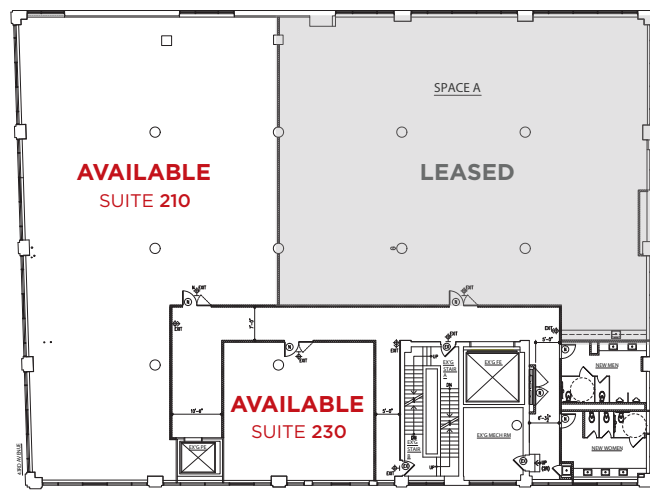
SUITE 210
AS-BUILT PLAN



SUITE 230
AS-BUILT PLAN

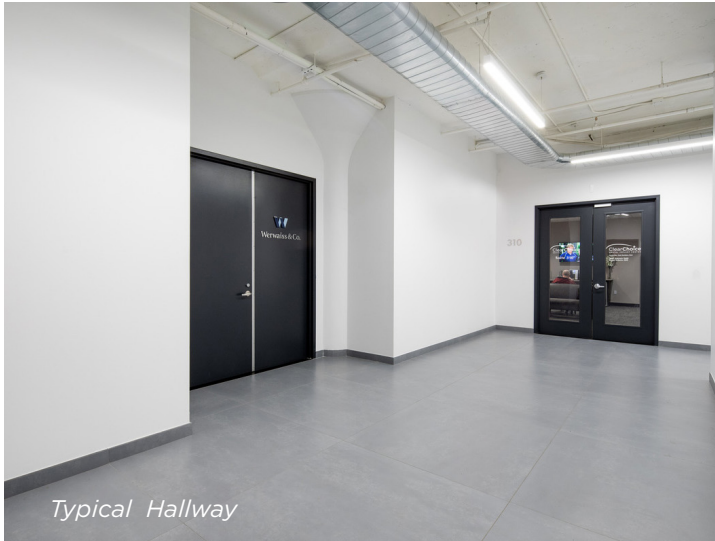


2ND FLOOR PLAN



22-15 43RD AVENUE

PHOTOS



Typical Hallway



Typical Bathroom



Typical Pantry



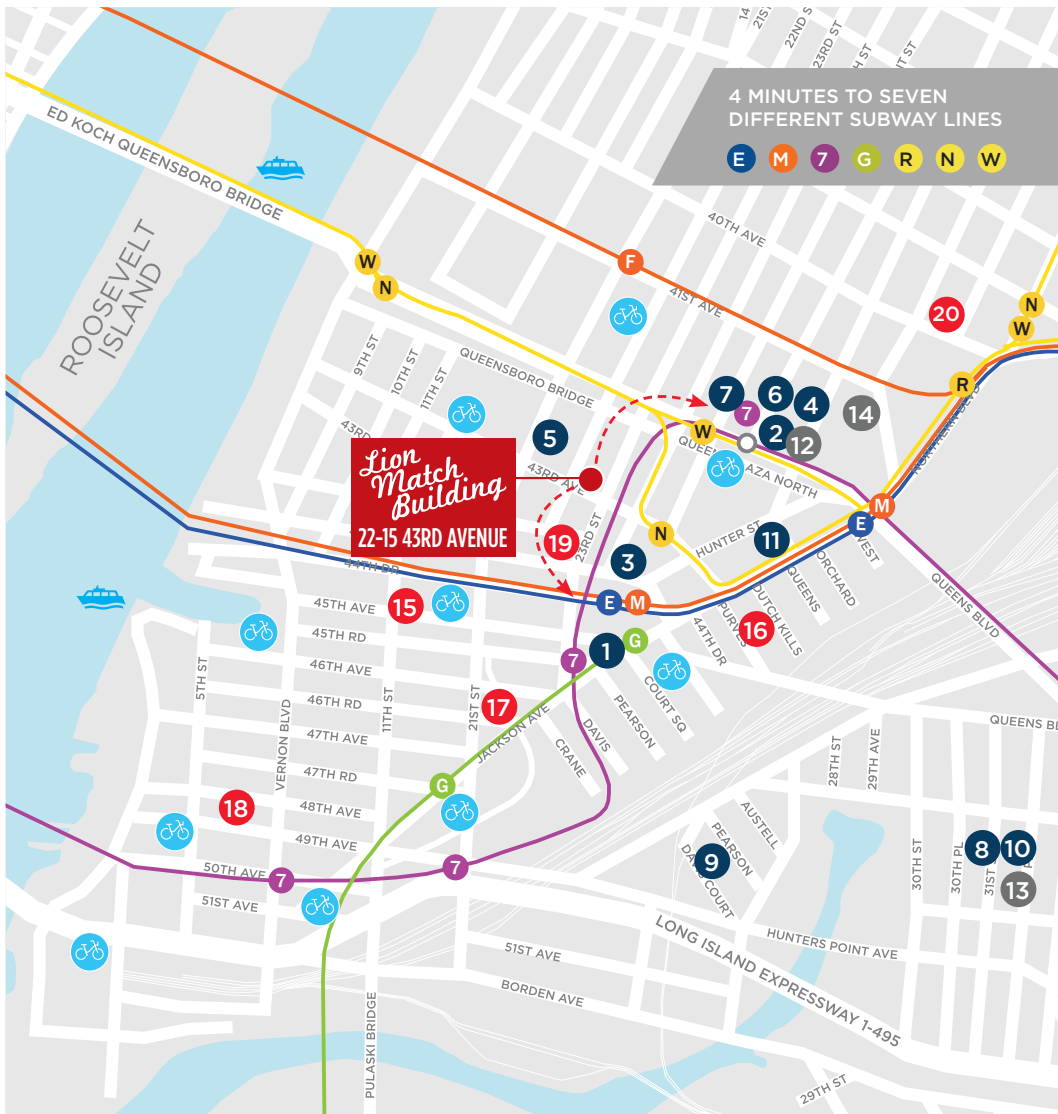
Typical Conference Room



Suite 230

Lion Match Building

LOCATION



MAJOR TENANTS

- 1 Altice
- 2 Metlife
- 3 CUNY Law School
- 4 JetBlue
- 5 Silvercup Studios
- 6 Centene
- 7 Publicis
- 8 J. Crew Madewell
- 9 Boyce Technologies
- 10 Uber
- 11 Macy's/Bloomingdale's

CO-WORKING

- 12 WeWork
- 13 Regus Spaces
- 14 Green Desk

CULTURAL INSTITUTIONS

- 15 Dorsky Gallery Curatorial Programs
- 16 The Sculpture Center
- 17 MoMA PS1
- 18 The Chocolate Factory
- 19 The Secret Theatre
- 20 Flux Factory

CONNECTIVITY/TRANSIT:

Direct access to midtown Manhattan, Brooklyn, Roosevelt Island, Bronx and Long Island

Midtown Manhattan/Grand Central

7 minutes via 7

Penn Station

25 minutes via E

Port Authority

20 minutes via 7

East 34th Street

8 minutes via ferry

Cornell Tech (Roosevelt Island)

5 minutes via ferry, subway or car

LGA Airport

15 minutes via car / 30 minutes via public transit

JFK Airport

30 minutes via car / 25 minutes via public transit

8 subway lines, 15 bus lines, 74 Citibike bicycle stations

NYC Ferry Service: Hunters Point South, Long Island City (Gantry Plaza State Park), Astoria

LIRR, 4 bridges, 1 tunnel

Lion Match Building



FOR MORE INFORMATION, PLEASE CONTACT:

JOSEPH GROTTO, JR.
212 318 9727
joseph.grotto@cushwake.com

EDWARD KENT
212 318 9772
edward.kent@cushwake.com

©2020 Cushman & Wakefield. All rights reserved. The information contained in this communication is strictly confidential. This information has been obtained from sources believed to be reliable but has not been verified. NO WARRANTY OR REPRESENTATION, EXPRESS OR IMPLIED, IS MADE AS TO THE CONDITION OF THE PROPERTY (OR PROPERTIES) REFERENCED HEREIN OR AS TO THE ACCURACY OR COMPLETENESS OF THE INFORMATION CONTAINED HEREIN, AND SAME IS SUBMITTED SUBJECT TO ERRORS, OMISSIONS, CHANGE OF PRICE, RENTAL OR OTHER CONDITIONS, WITHDRAWAL WITHOUT NOTICE, AND TO ANY SPECIAL LISTING CONDITIONS IMPOSED BY THE PROPERTY OWNER(S). ANY PROJECTIONS, OPINIONS OR ESTIMATES ARE SUBJECT TO UNCERTAINTY AND DO NOT SIGNIFY CURRENT OR FUTURE PROPERTY PERFORMANCE.