

**SHORT TERM LEASE**  
**18,500 SF OF LAND (not building)**

**LOCATION:**

23-02 42<sup>nd</sup> Road  
Long Island City, NY

**SIZE:**

18,500 SF

**FEATURES:**

Paved and Fenced lot  
Easy Access to Queens Plaza and Court Square  
Suitable for Parking and/or Storage of Vehicles  
and/or Equipment

**POSSESSION:**

UPON LEASE SIGNING THROUGH JUNE 2021

**RENT:**

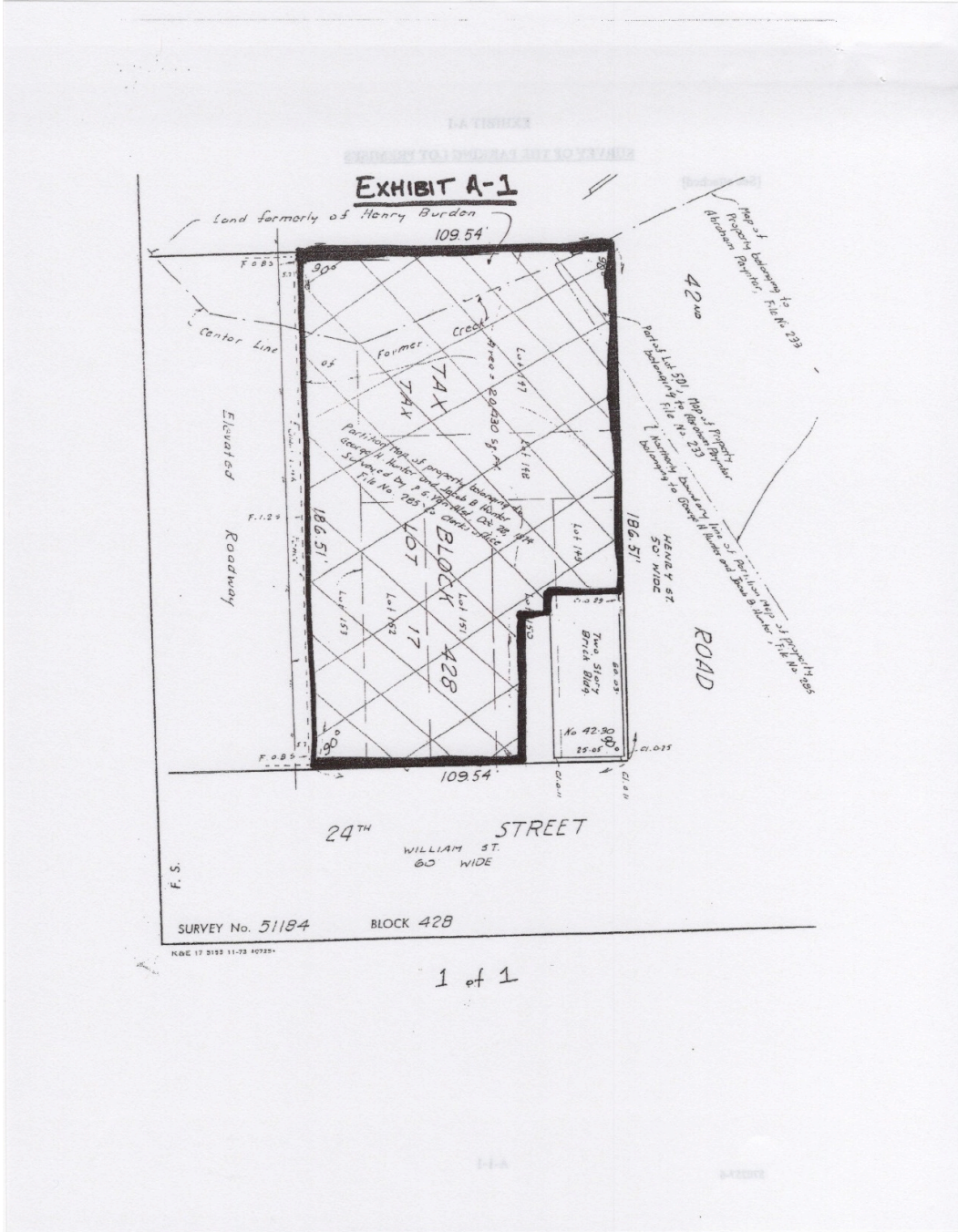
\$20,000 per month

**CONTACT:**

WERWAISS & CO., INC. (Exclusive Agent)  
22-15 43<sup>rd</sup> Avenue - Suite 300  
Long Island City, NY 11101  
(212) 983-0044  
[werwaiss.com](http://werwaiss.com)  
[gwerwaiss@werwaiss.com](mailto:gwerwaiss@werwaiss.com)

All information furnished regarding property for sale, rental or financing is from sourced deemed reliable. No representation is made as to the accuracy thereof and it is submitted subject to errors, omissions, change of price, rental or other conditions, prior sale, lease or financing, or withdrawal without notice. BROKERS PROTECTED BY AGREEMENT ON FILE.

1/8/21



All information furnished regarding property for sale, rental or financing is from sourced deemed reliable. No representation is made as to the accuracy thereof and it is submitted subject to errors, omissions, change of price, rental or other conditions, prior sale, lease or financing, or withdrawal without notice. **BROKERS PROTECTED BY AGREEMENT ON FILE.**